



The BRECC Action Challenge

Building Community Resilience

PROJECT INFORMATION, 8/15/24

The National Association of Counties (NACo) Building Resilient Economies in Coal Communities (BRECC) initiative serves coal communities seeking to revitalize and diversify their economies. Supported by the U.S. Department of Commerce Economic Development Administration (EDA), BRECC is a knowledge-sharing community of practice. BRECC's activities connect coal communities across the nation, support local leaders and build capacity in under-resourced communities.

THE BRECC ACTION CHALLENGE

BRECC's Action Challenge is a technical assistance program that empowers local leaders to identify and advance projects for economic diversification. The Action Challenge connects community teams with economic development experts from NACo's BRECC partners. Colorado non-profit Community Builders provides the coaching for western communities, including Colorado's West End. For one year, the selected teams receive one-on-one coaching to develop a locally-driven economic diversification strategy.

THE WEST END BRECC PROCESS

The West End Economic Development Corporation (WEEDC) worked with the communities of the West End (Nucla, Naturita, Norwood, and Montrose County) to apply for the BRECC Action Challenge community assistance. The West End was one of seven communities nation-wide to be selected to receive this assistance in 2024. The West End Team has been paired with Community Builders for the year-long technical coaching process. The process will focus on the creation of team-led economic development strategies that are paired with funding opportunities and feasible action steps. These will then feed into the West End's regional Sustainability Plan.

PROJECT SCHEDULE



What is the project goal?	To create and advance practical economic revitalization and diversification projects for coal communities.
Who is involved in the Action Challenge?	<p>The West End Team:</p> <ul style="list-style-type: none"> » Towns of Naturita, Norwood, and Nucla » Montrose County » West End Economic Development (WEEDC) <p>Community Coach:</p> <ul style="list-style-type: none"> » Community Builders (communitybuilders.org) <p>Federal Partners:</p> <ul style="list-style-type: none"> » Administered by the National Association of Counties » Funded by Economic Development Administration (EDA) » Supported by the BRECC Advisory Council including: Interagency Working Group for Coal & Power Plant Communities, USDA, EPA, DOE, Colorado OJT, Blue Green Alliance, Opportunity at Work, National Skills Coalition, Outdoor Recreation Roundtable, Edison Electric Institute, and the Federal Reserve Bank
What does BRECC provide?	One year of technical assistance (approximately ~\$34,000 value), leading to the creation of a locally-driven Economic Development and Diversification Plan
What is the timing?	February 2024 to March 2025
Who creates the economic strategies?	The West End Team members will collaboratively identify the economic development strategies with periodic input from the Town Boards and West End Solutions Group.

THE OVERARCHING EFFORT

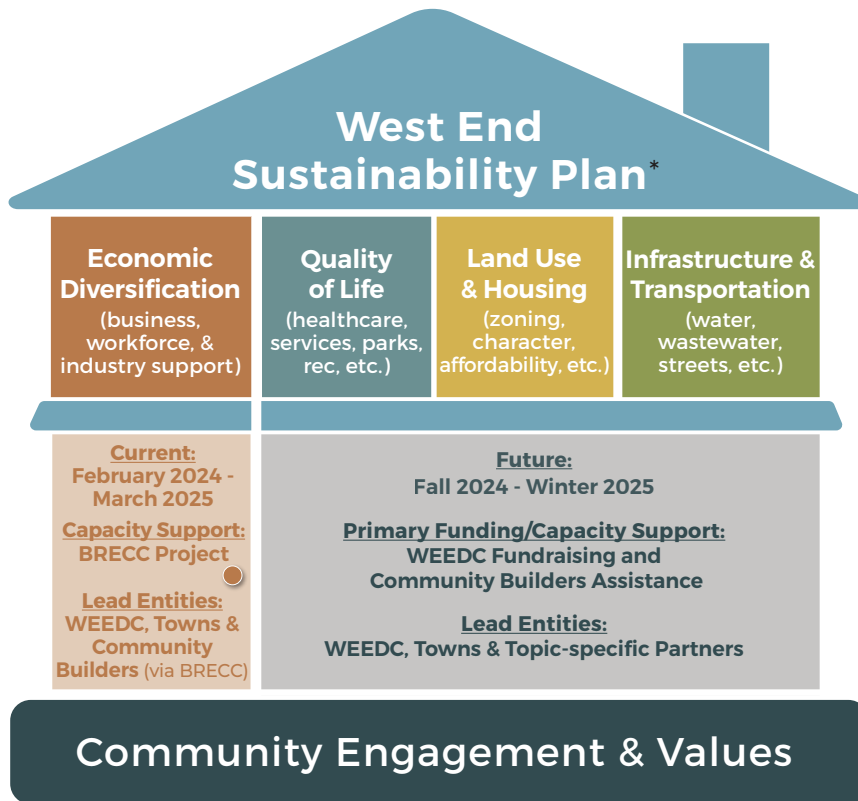
EXAMPLE PLAN TOPICS

TIMING:

FUNDING:

LED BY:

THE FOUNDATION



***WHAT IS BRECC?**

For more information about the Building Resilient Economies in Coal Communities (BRECC) process, visit bit.ly/BRECC-Info or reach out to Makayla Gordon (mgordon@choosewestend.org).

BRECC is supported by the EDA and Community Builders and focuses on economic development recommendations that will be incorporated in the Sustainability Plan.